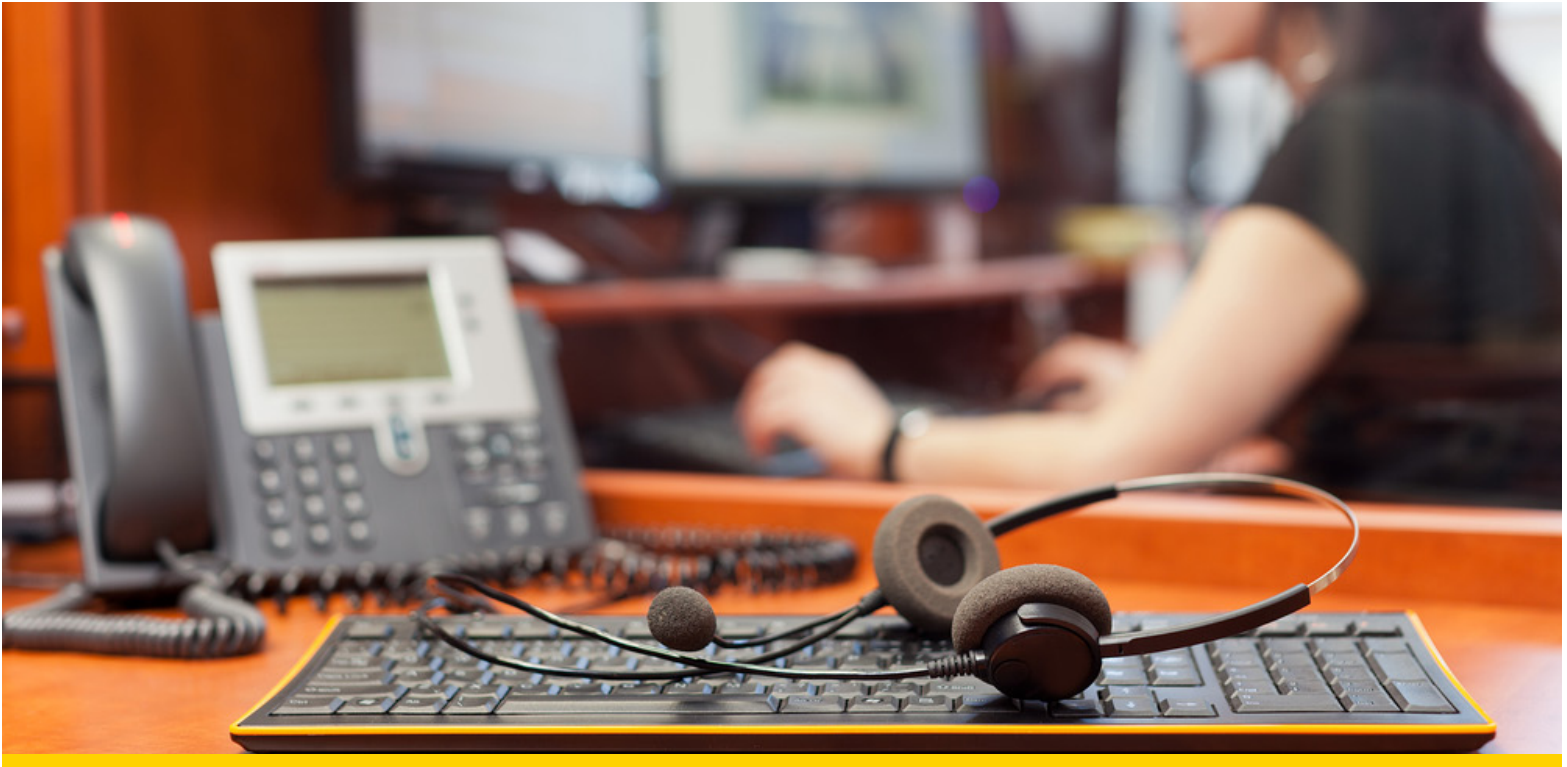


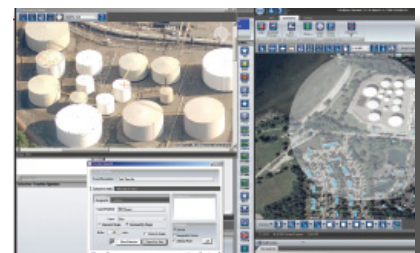
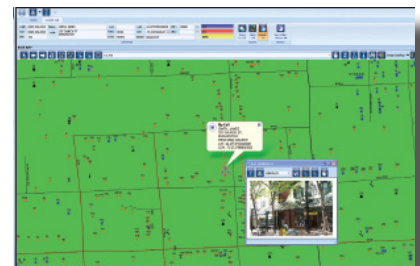
Mapped ALI



Your Challenges

Rapid changes in technology, combined with the challenges of maintaining an accurate map and having it work together with other 9-1-1 systems, means your map must:


- Integrate with your current call handling system
- Be user-friendly for call takers
- Display wireless Phase I & II calls as well as landline, VoIP, AVL and CAD events
- Receive automated on-the-fly location updates
- Be built on a standard industry GIS (ESRI) platform



 @TCS_NG911

 Next Generation 9-1-1
Resources for the PSAP

 www.911fromTCS.com

 1.800.557.5869

 sales@telecomsys.com

See TCS' complete line of products and services at www.telecomsys.com.

Your Established Partner

TeleCommunication Systems, Inc. (TCS) (NASDAQ: TSYS) is a world leader in high availability and secure mobile communication technology. TCS infrastructure forms the foundation for market leading solutions in E9-1-1, text messaging, commercial location and deployable wireless communications. TCS is at the forefront of new mobile cloud computing services providing wireless applications for navigation, hyper-local search, asset tracking, social applications and telematics. Millions of consumers around the world use TCS wireless apps as a fundamental part of their daily lives. Federal government agencies depend on TCS' cyber security expertise, professional services, and highly secure deployable satellite solutions for mission-critical communications. Headquartered in Annapolis, MD, TCS maintains technical, service and sales offices around the world. To learn more about emerging and innovative wireless technologies, visit www.telecomsys.com.

TeleCommunication Systems, Inc.
275 West Street
Annapolis, MD 21401 USA
Toll Free: 1.888.728.8797
Outside US: +1.410.263.7616
www.telecomsys.com

Enabling Convergent Technologies® is a registered trademark of TCS. All other trademarks are the property of their respective companies. Information subject to change without notice. | NASDAQ: TSYS | 150408

TCS TeleCommunication Systems
Enabling Convergent Technologies®

Specifications

xTrakker™

The xTrakker™ customizable and intuitive user interface enables your agency's personnel to locate callers with ease. While xTrakker™ integrates with most current call handling and CAD systems, when integrated with microDATA's x9GIS™, a powerful ESRI GIS database system can be realized. xTrakker™ empowers 9-1-1 agencies with the following features:

- Integrates with all major call handling solutions
- User-friendly GUI enables ease of use and learning
- Displays wireless phase I and phase II, landline, VoIP and the location of available response units in relation to caller
- Ability to receive real-time GIS data updates from centralized GIS database when xTrakker™ Enterprise is integrated with the x9GIS™ Database Management System

AVL and CAD Integration Features

- Graphical display of AVL and CAD events sent directly to map*
- Configure and display many different symbols including fire, flood, burglary, etc.
- CAD events stored in tabular format enabling sorting by numerous criteria including incident ID, agency, priority, complaint, description, address, community and phone
- Click to zoom on map to the selected CAD event
- Create CAD event with right mouse click on the incident location with supporting vendor
- All address validation performed through direct access to GIS data—no need to use CAD geo-file
- Silent dispatch (just right click on an active CAD event to send the ALI to the AT-Mobile™ field unit)

xTrakker™ Features

- Real-time display of caller location and available response units and their respective locations and proximity to the caller (AVL**)
- Automatic display of landline, Wireless Phase I and II, VoIP, AVL**, CAD events, and ALI rebids
- Dynamic display rendering
- Workload balancing
- Multi-threaded searches
- Robust SQL back-end
- Built on ESRI ArcGIS Engine 10.x
- Show agency ESZ/ESN information easily (double click)
- Completely customizable interface based on permission level
- Real-time GIS data updates from ArcGIS 10.x/x9GIS™ Server
- Further enhanced performance when operated with the xT911™ map-centric call handling system
- User customizable and intuitive user interface
- Built-in interface for editing layers, properties and display (for example, scale for display, transparency, and symbology)
- Show digital graphics, if available
- Dynamic zoom
- Simplified legend for turning layers on or off
- Ability to display multiple types of imagery including aerial imagery, orthophotos, and any registered raster file in background
- Pictometry's oblique imagery directly embedded into the application